

# SafeConsole Encryption Management Platform



Never lose track of your sensitive data and intellectual property

## Manage All Your Encrypted Endpoints for a Mobile, Global Workforce

DataLocker encryption solutions make it simple to secure data for transport, storage and sharing. Now SafeConsole allows you to centrally manage those endpoints, no matter where they go.

SafeConsole is your secure storage command center for encrypted endpoints, including the DL3<sup>®</sup> encrypted external hard drive, Sentry<sup>®</sup> encrypted flash drive, SafeCrypt<sup>®</sup> cloud encryption gateway and EncryptDisc<sup>®</sup> self-encrypting optical media.\*

SafeConsole is ideal for mobile employees that are handling sensitive data or intellectual property in multiple locations. SafeConsole allows you to administer hundreds or thousands of encrypted endpoints with efficiency, visibility and control.

### Selected Features at a Glance



**Inventory.** Monitor all your encrypted endpoints, including their location anywhere in the world. Integrate with Active Directory to track users, assigned devices and connected computers with ease.



**Audit.** See which files are saved to or deleted from your encrypted endpoints at any given moment. Use a complete audit trail to monitor activity by user, including connections, login failures, resets and loss reports.



**Control.** Enforce policies, such as password rules, file-type restrictions or geographic boundaries, across multiple encrypted endpoints. Reset passwords, switch endpoints into read-only mode, and even

remotely wipe them in case of loss or theft.



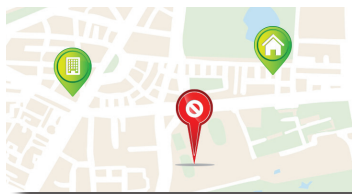
**Report.** Gain a big-picture view of your encrypted endpoints across the globe. Access reports by configuration, geographic location, status, updates, recent activity and more.

### About DataLocker

DataLocker is an innovative provider of encryption solutions. DataLocker products secure systems, media, external storage and cloud services for governments, military and enterprises around the world. Headquartered in Overland Park, Kansas, DataLocker products combine superior convenience and usability with state of the art security. DataLocker is "Simply Secure." For more information, please visit

[datalocker.com](http://datalocker.com)

\* SafeCrypt and EncryptDisc support coming soon.

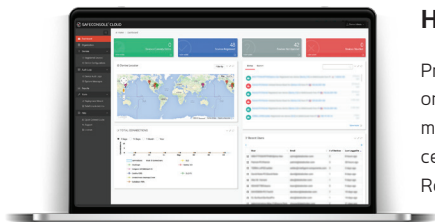


## Geolocation and Geofencing

Use IP-based location tracking to pinpoint the exact location of your encrypted endpoints anywhere in the world. SafeConsole can also “geofence” your devices, making them accessible only within specific geographic boundaries.

## Easy and Rapid Deployment

SafeConsole offers an easy roll-out scheme for small and large organizations with connection to LDAP (AD) option. Administrators can authenticate to access SafeConsole with their AD credentials. Install SafeConsole on your server, then deploy drives to users. Each device is registered to a specific user in SafeConsole and linked to the user in the corporate directory (if available). The all-in-one installation has the power to serve large device deployments in the thousands if required.



## How Does it Work?

Protecting your data, your mobile workforce, and your organization just got easier with SafeConsole. SafeConsole manages your encrypted endpoints with a secure storage command center for administering and policing the use of SafeConsole Ready devices.

## Flexible Deployment Options for SafeConsole

### Cloud-Hosted Service

- Up and running in minutes
- Log in and manage from anywhere
- Email and phone support
- Priced per endpoint/year plus a one-time setup fee

### On Prem

- Requires a dedicated Windows based server
- Log in and manage from anywhere
- Modest hardware and bandwidth requirements
- Ideal for deployments of 300 or more endpoints

### Hardware Appliance

- Easy on-premise deployment
- Self-contained 1U rack-mounted appliance
- One-year warranty and maintenance
- Unlimited endpoints, one-time license fee

Visit [safeconsole.com](http://safeconsole.com) for additional details, demos and pricing.